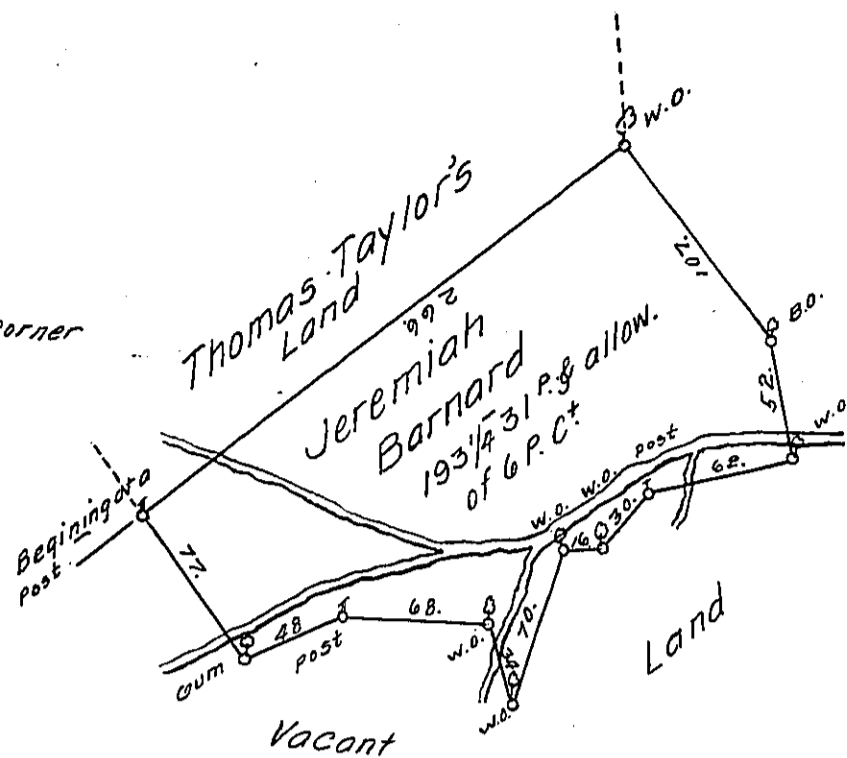


Ex-

Beginning at a Post a Corner of Tho^s Taylor's Land

thence	S 38° E	77	Gum
	N 66° E	48	Post
	S 88° E	68	W ^o
	S 17° E	34	W ^o
	N 16° E	70	W ^o
	N 84° E	16	W ^o
	N 42° E	30	Post
	N 77° E	62	W ^o
	N 9° W	52	B ^o
	N 38½° W	107	W ^o Tho ^s Taylor's Corner
thence by ye same	S 52° W	266	to ye Place of Beginning



Jeremiah Barnard 193¼^{as} allowance. Situate on the Branches of Muddy Creek on the west side of Susquehanna River, 100^{as} where of was Survey'd to him (by Vertue of Warrant Dated the 12th of December A.D. 1745) the 5th of the 3rd month 1746, & the Remainder Return'd by Vertue of a Warrant Dated September ye 24th A.D. 1746.

In^o Churchman. —

IN TESTIMONY that the above is a copy of the original remaining on file in the Department of Internal Affairs of Pennsylvania, made conformably to an Act of Assembly approved the 16th day of February, 1833, I have hereunto set my Hand and caused the Seal of said Department to be affixed at Harrisburg, this twenty fifth day of September 1911.

Henry Howells
Secretary of Internal Affairs.